



NSW Point to Point Transport Commission - Industry Portal

Recommended Browser and Settings

Supported Browsers and Devices

Internet Browsers

It is recommended that you use the latest version of one of these browsers

- Google Chrome (Recommended)
- Microsoft Edge
- Mozilla Firefox
- Safari

Mobile Device Support

The following devices are supported on the industry portal

- Laptops
- Netbooks
- Tablet PCs
- iPad (iPad mini is not recommended)

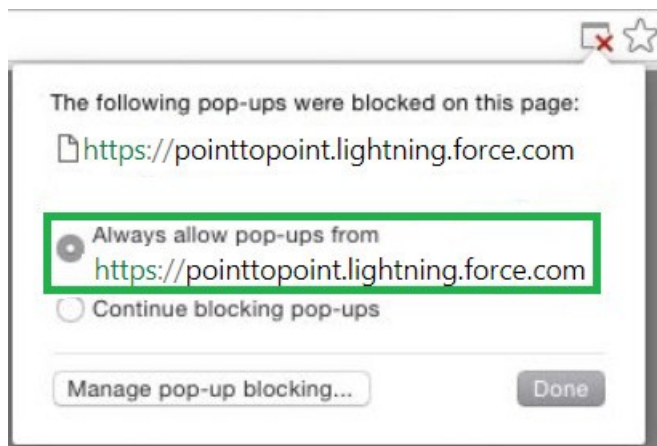
Smartphone usage is not supported.

Browser Settings for Allowing Pop-ups from P2P Application

As shown below, your browser may prompt you when a pop-up attempts to populate. When this takes place, click Allow Pop-ups from This Site.

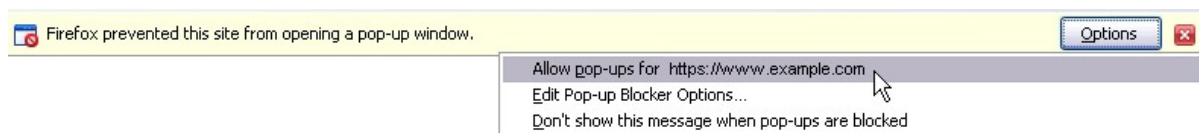
Google Chrome

1. Click on red X icon
2. Select Always allow pop-ups
3. Press Done



Mozilla Firefox

1. Click on Options
2. Click on Allow pop-ups, you can also select “Edit Pop-up Blocker Options” to add website address so that browser doesn’t block any pop-up from this site in future



If your browser's popup blocker settings are configured for maximum security, you won't be able to view any popup windows within Salesforce. This includes all popup windows, even those that provide necessary functionality such as confirmations prior to saving or deleting, lookup dialogs for selecting a record, the Help & Training window, and more.

To make sure that you always receive pop-ups from P2P application, follow the instructions below to add below domains -

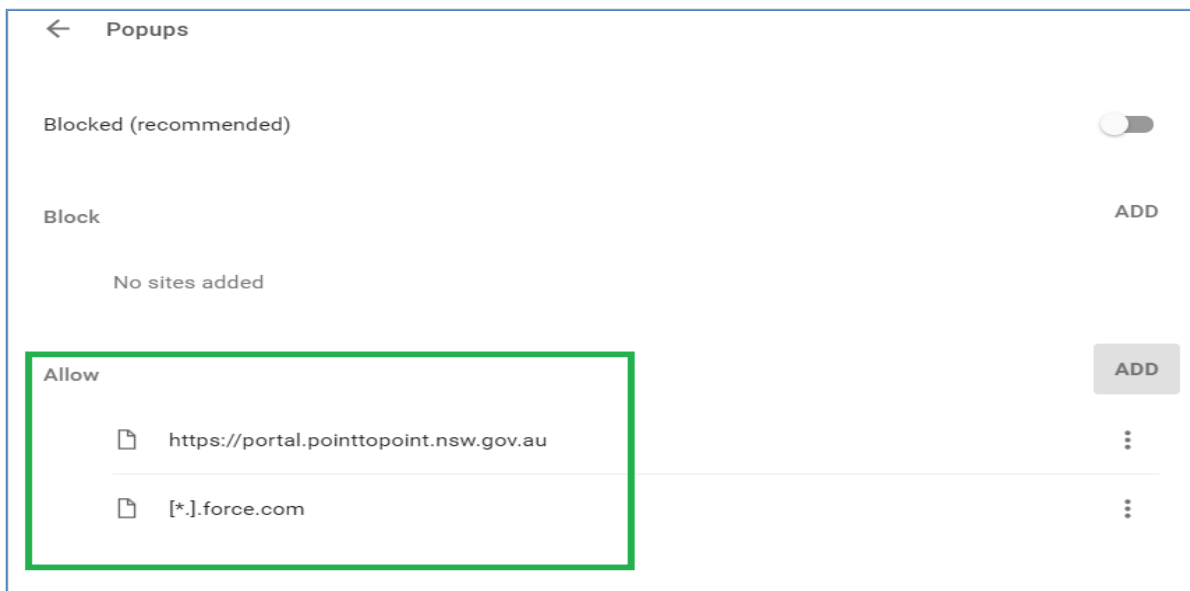
For smooth experience while browsing P2P applications, make sure that pop-ups are allowed from given below websites

<https://portal.pointtopoint.nsw.gov.au>

Below steps will give you an overview of browser settings configurations, by browser type, which are required for P2P/Salesforce pop-up windows to display correctly.

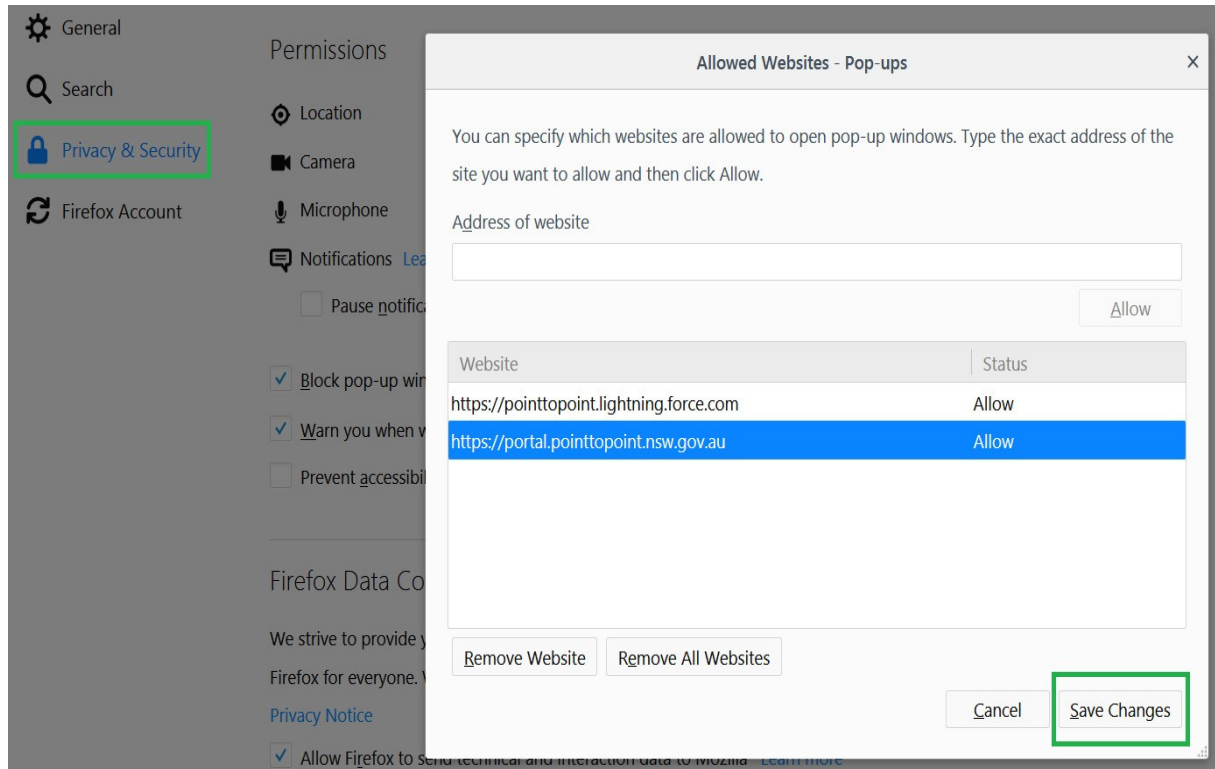
Google Chrome

1. Click the Chrome menu on the browser toolbar. Select Settings.
2. Then click the Settings menu on the upper left hand area of the browser window.
3. Click Advanced.
4. In the "Privacy and Security" section, click the Content settings button.
5. Click Pop-ups.
6. Use the 'Add' option to add above sites to the allowed list.



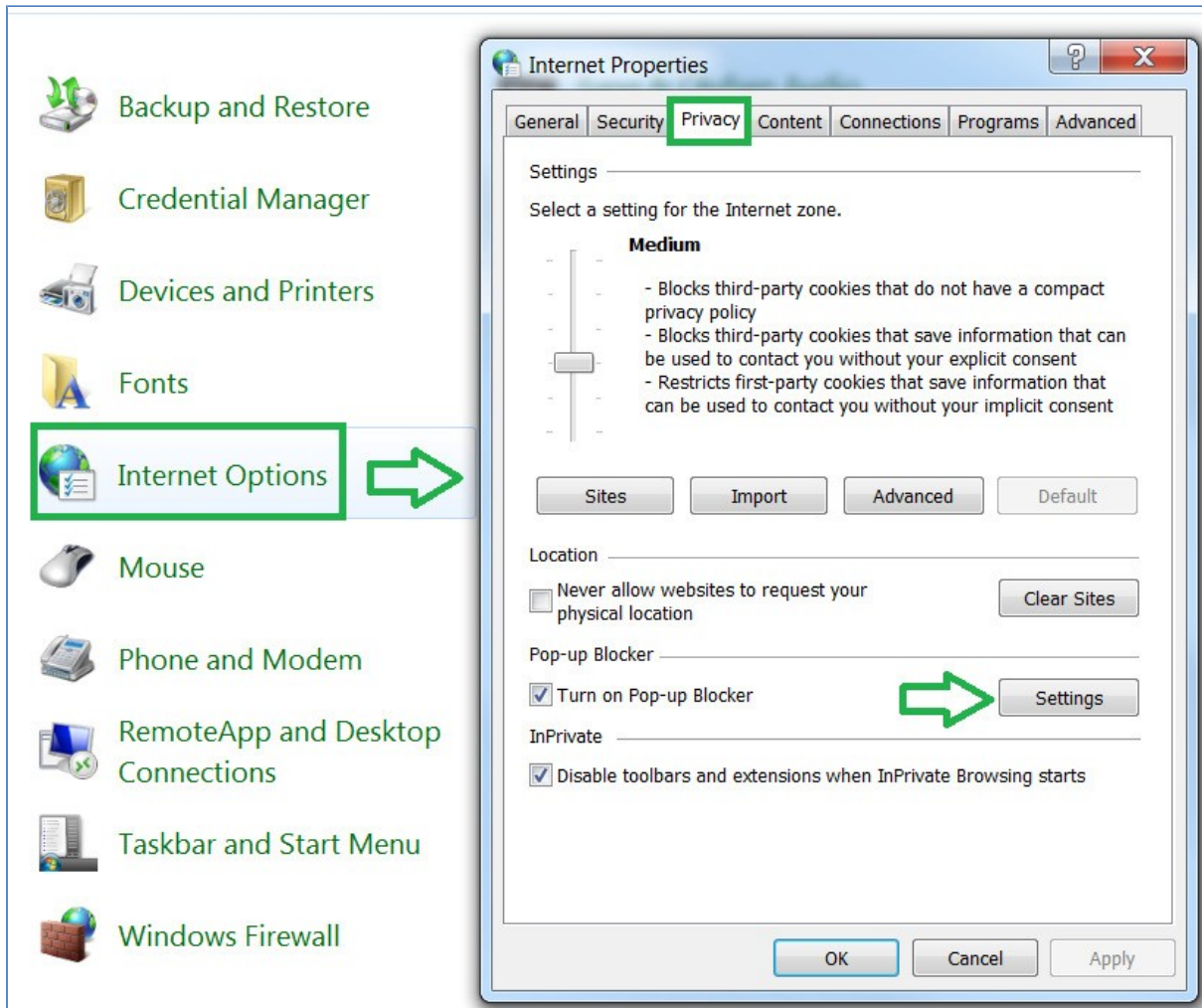
Mozilla Firefox

1. Click on Firefox button on the upper right > Options.
2. Select the 'Privacy & Security' and got to Permissions section.
3. If "Block pop-up windows" is ticked, click on the Exceptions button.
4. Type site addresses (refer below snapshot) in the "Address of website:" field, click on Allow, then click close.
5. Click OK on the Options window. Restart Mozilla Firefox



Internet Explorer

1. Go to Tools menu in Internet Explorer.
2. Click on Internet Options and go to Privacy Tab, If 'Turn on Pop-up Blocker' is ticked then click on Settings otherwise no further action is required



3. Please add sites mentioned earlier in exceptions to allow pop-ups from these sites, Click OK after adding site details.

