



Industry News Update: July 2020

Monday 20 July 2020

Dear Point to Point Transport Service Providers,

This email contains important industry information:

- Albury vehicle sanitisation station
- Prestons vehicle sanitisation station
- NSW/VIC cross-border permits
- Murray River border update
- NSW/QLD borders
- Waverley Pick Up & Drop Off (PUDO) Bay trials
- Changed traffic conditions in Sydney CBD
- The M8 is open
- Industry support package update

ALBURY VEHICLE SANITISATION STATION

In response to the closure of the NSW/Victorian border, the NSW Government is launching a pop up vehicle sanitisation station in Albury to minimise the spread of Coronavirus and keep drivers and passengers safe.

This is a complimentary service for all point to point transport vehicles (taxis and hire vehicles, including rideshare) plus all government vehicles (Police, Ambulance, Health, TfNSW etc.). They are entitled to one sanitisation, per vehicle, per day, performed by staff on-site.

Vehicle sanitisation includes the disinfection of outside and inside door handles, boot handle, window controls, steering wheel, visors, centre console, gear stick, handbrake, grip handles, glove box, dashboard, seatbelts, seats, headrests, mobile phone holders, cup holders, fuel door, fuel cap, meters and payment equipment. This is not a car wash service.

Under point to point transport laws, service providers have a primary duty of care to ensure the health and safety of drivers and other persons, including passengers, so far as is reasonably practicable, while they're engaged in providing a passenger service. This includes taking steps to reduce the risk of COVID-19.

The NSW Government is assisting the point to point transport industry during the Coronavirus outbreak, with the aim of reducing the spread of the virus to ensure driver and passenger safety is upheld.

Point to point transport operators continue to provide an essential service for people in NSW.

WHEN: Monday 20 July 2020.

OPERATING HOURS:

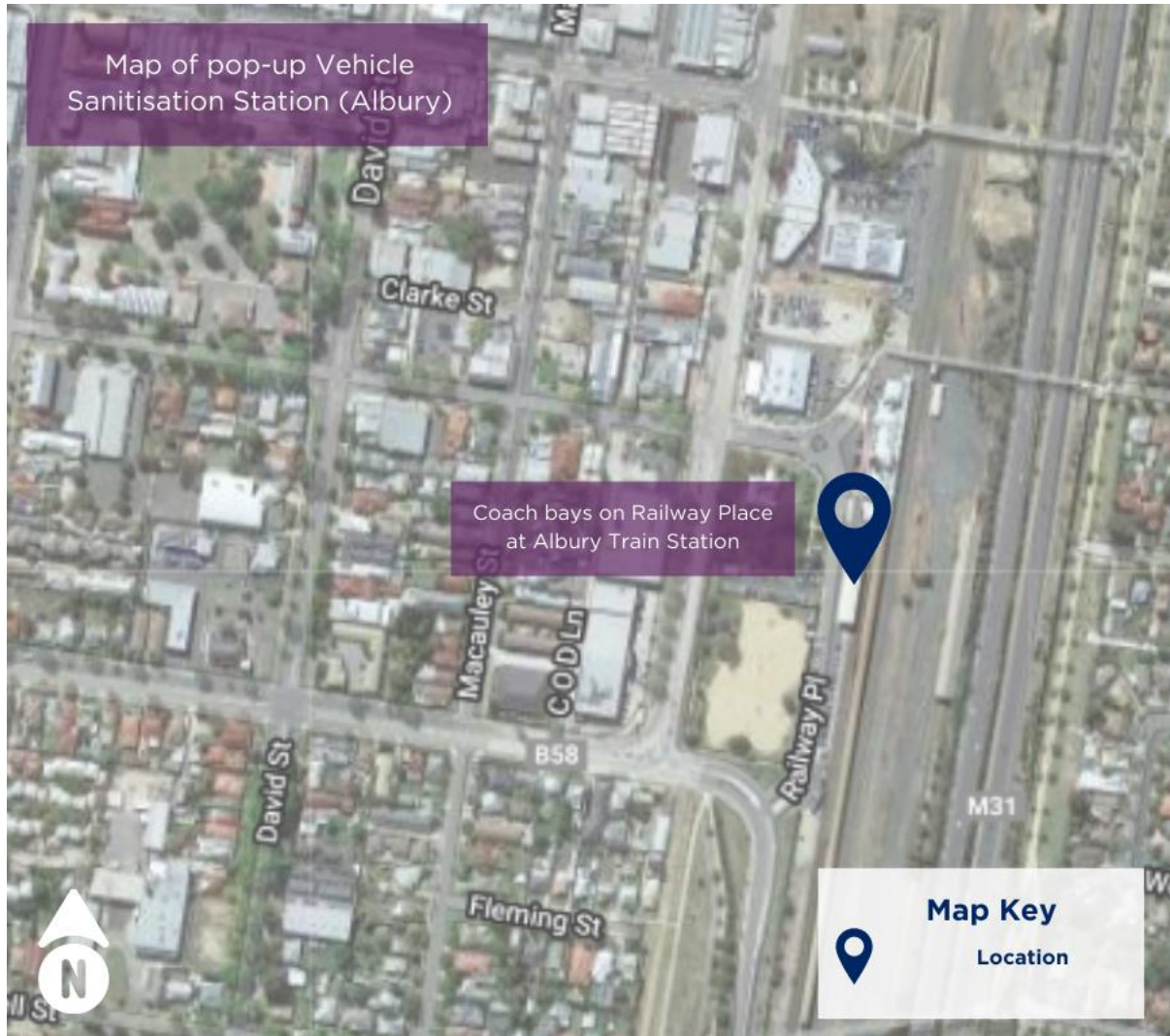


Point to Point Transport Commissioner

Monday to Saturday: 7am to 7pm
Closed on Sundays and public holidays.

WHERE: Albury Station – Railway Place, Albury

Google Maps: [Albury Station](#)



PRESTONS VEHICLE SANITISATION STATION

Another point to point vehicle sanitisation station has been fast tracked in Prestons to provide safer point to point transport services for passengers and drivers, following an increase of COVID-19 cases in Western Sydney.

The program has been developed to provide cleaner and safer point to point transport services for passengers and drivers.

WHEN: Wednesday 22 July 2020.

OPERATING HOURS:

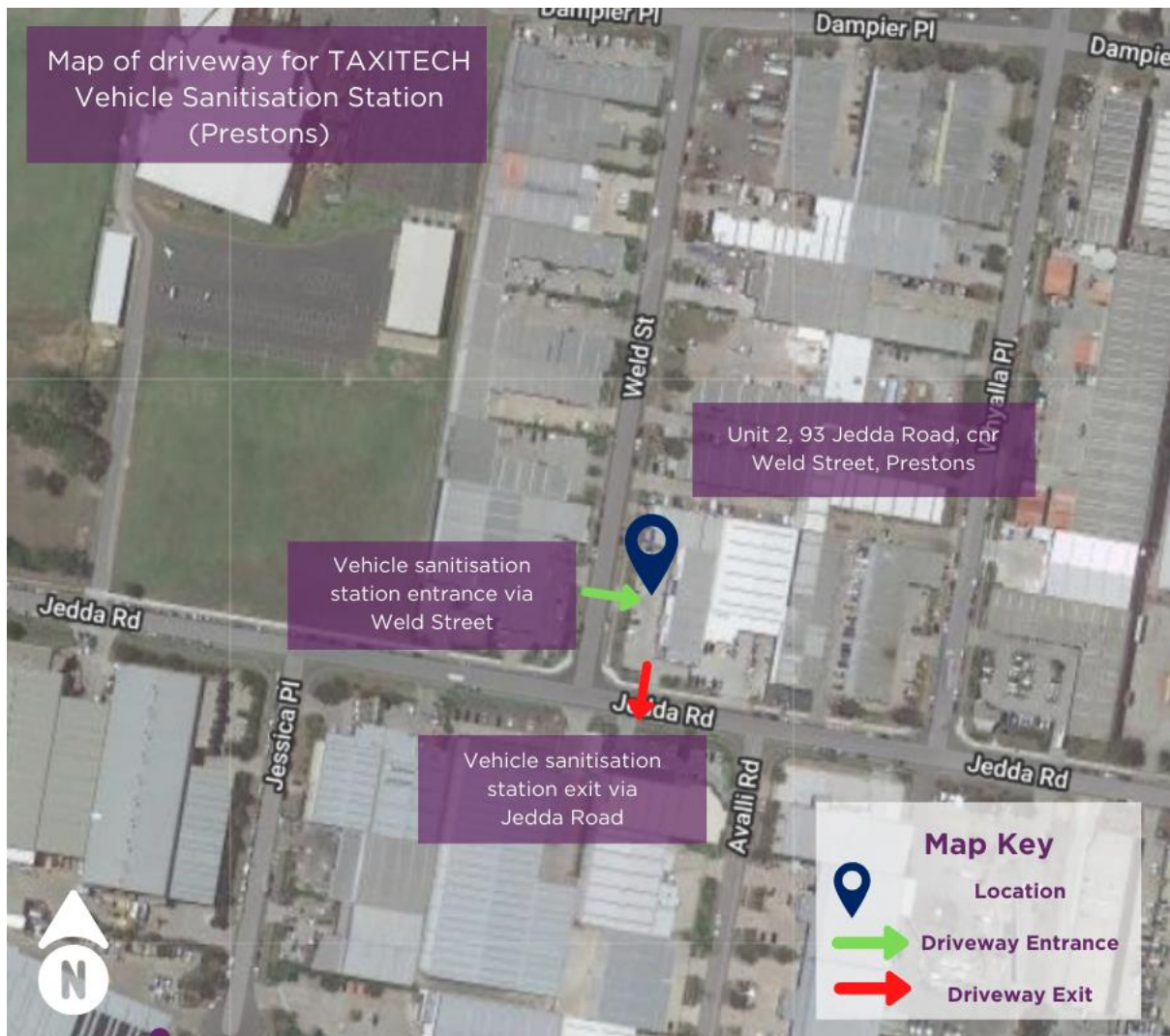
Monday to Friday: 7am to 7pm

Saturday 8am – 5pm

Closed on Sundays and public holidays.

WHERE: Located at TAXITECH – Unit 2, 93 Jedda Road, cnr Weld Street, Prestons

Google Maps: [TAXITECH, Prestons](#)



NSW/VIC CROSS-BORDER PERMITS

Transport for NSW is working hard to ensure that critical transport services – including those provided by taxis and hire vehicles (including rideshare) – are able to continue during the temporary NSW/Victoria border closure.



Currently, only holders of an entry permit can enter NSW from Victoria – which individuals can apply for through [Service NSW](#).

NSW has created a new exemption category under the entry permit, to allow people within the transport industry to travel between NSW and Victoria for the purpose of their duties and, provided they have a COVID-19 Safety Plan, they will not have to self-isolate. This includes drivers for your service if you have a COVID-19 Safety Plan in place.

The new exemption category is: Critical services – movement of freight or persons on a commercial basis.

The new exemption requires you to have a COVID-19 Safety Plan and to share this with your drivers. Guidelines to assist the industry to complete a Safety Plan are available at NSW Government's [COVID Safe business](#) webpage.

Consistent with the need to prepare a COVID-19 Safety Plan, Transport for NSW is asking you and your drivers to be conscious of the significantly increased health risk in Victoria, to take extra care and be vigilant in practising physical distancing, minimising contact and maintaining good hygiene practices to slow the spread of the Coronavirus.

Any drivers displaying symptoms of COVID-19 should not be permitted to work.

While all efforts are being made to ensure transport operations continue as efficiently as possible, drivers should be encouraged to plan for possible delays. You can see the latest traffic information at [Live Traffic NSW](#).

MURRAY RIVER BORDER UPDATE

From midnight **Tuesday 21 July** a border zone, defined along the Murray River, will be established.

Entry to NSW from Victoria will be restricted, and exemptions for NSW residents travelling from the Victorian side of the border zone will be limited further.

Permits issued up until the commencement of the border zone will expire at midnight 21 July. If you remain eligible under the new rules you'll need to apply for a new permit.

NSW/QLD BORDERS

All operators travelling across the Queensland border need to fill in a border declaration and display a border pass. The Queensland border pass is valid for seven days and you will



need to apply for a new one after this time. More information is available at

<https://www.qld.gov.au/border-pass-confirmation>.

There will be restricted entry for people travelling from Victoria, and the Queensland Government announced that any resident from the Campbelltown or Liverpool Local Government Areas will be denied entry into Queensland from 12pm on 14 July 2020. For information regarding operators performing an essential activity, including transport, visit the [Queensland Government](#) website.

For the most up to date information on border permits please visit pointtopoint.nsw.gov.au

WAVERLEY PUDO BAY TRIALS

Transport for NSW's 'Open Data & Innovation' team are working with Waverley Council who have designated some new kerbside spaces as pick-up and drop-off bays (PUDO Bays) which are open to use for the public including rideshare operators.

The goal is that private vehicles and rideshare drivers will use these designated areas instead of busy zones and areas where they are not allowed to stop. They are trialling 10 locations around Bondi Beach and Bondi Junction.

Taxis are also able to use PUDO Bays however they should not be used like a taxi zone for standing, rather just for pick-up and drop-off.

As part of the program, Transport for NSW are publishing the locations of the PUDO Bays on the [open data hub](#), so MaaS (Mobility as a Service) Apps, navigation tools and rideshare companies can integrate the locations into their products. TfNSW will be supporting 2x MaaS apps to integrate the data for the trial period which runs for 12 months starting 27 July.

Point to point drivers are encouraged to use these PUDO Bays, which are located in the following places:

- Grafton Street outside Bondi Junction Interchange
- Glenayr Avenue south side between Glasgow Avenue and Beach Road
- Curlewis Street north side between Campbell Parade and Gould Street
- Roscoe Street north side between Gould Street and Gould Lane
- Hall Street north side between Gould Lane and Campbell Parade
- Campbell Parade west side between Lamrock Ave and Hall Street
- Hall Street north side between O'Brien Street and Gould Street
- Adelaide Street west side between Oxford Street and Grafton Street
- Bronte Road west side between Ebley Street and Spring Street (this will be installed following completion of the Bondi Junction Cycleway).

CHANGED TRAFFIC CONDITIONS IN SYDNEY CBD

Changed traffic conditions will be in place from Monday 20 July in various areas of the Sydney CBD, weather permitting.



This work is being carried out by the City of Sydney Council in response to the Coronavirus outbreak and to complete the pedestrianisation of George Street. These changes will be in place to ensure people can get into and around the city while maintaining physical distancing measures.

Point to point transport drivers and service providers are encouraged to refer to the [CBD Preferred Driving Routes map](#), and to plan their routes safely.

Learn more in the point to point [industry news article](#).

THE M8 IS OPEN

The second stage of the WestConnex project, the M8, has opened.

The M8, previously known as the new M5, adds twin 9 kilometre tunnels from Beverly Hills to St Peters and duplicates the existing M5 East corridor.

Motorists will save around a half an hour driving between Liverpool and south-western Sydney during peak hours.

When complete, WestConnex will provide drivers with a 33km, traffic-light free network.

INDUSTRY SUPPORT PACKAGE UPDATE

Registered taxi vehicle owners including Wheelchair Accessible Taxi (WAT) vehicles no longer need to apply through Service NSW for the industry stimulus package.

Instead, a subsidy cheque of \$2,900 will be sent to eligible registered Taxi and WAT owners from Friday 10 July onwards.

Use [this flowchart](#) to find out if you're eligible.